



NEWINGTON
LONDON

2 Bedrooms

Apartment

Located in London

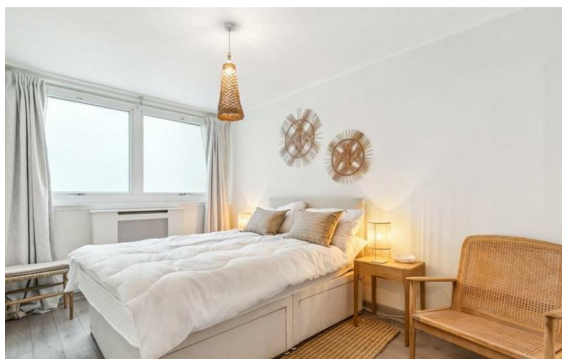
£840 Per Month



info@newingtonstates.com

<http://www.newingtonstates.com>

020 7724 2233



A well presented, two bedroom, two bathroom maisonette with patio garden set within this beautiful purpose built block in Marylebone. Comprising of one double bedroom, one single bedroom, 2 bathrooms, large reception room with lovely furniture and spacious fitted kitchen with excellent appliances. Further benefits include wood flooring, porter and residents only leisure centre.

Waterford Court is a secure, modern development located moments from the excellent transport links of Marylebone station and within a short walk to Baker Street and the open spaces of Regents Park.

EPC rating: C

Energy Efficiency Rating: C

Agents Note: Whilst every care has been taken to prepare these particulars, they are for guidance purposes only. All measurements are approximate and are for general guidance purposes only and whilst every care has been taken to ensure their accuracy, they should not be relied upon and potential buyers/tenants are advised to recheck the measurements.

NEWINGTON LONDON

60 Upper Montagu Street

London

W1H 1SN

020 7724 2233

info@newingtonstates.com

<http://www.newingtonstates.com>